

Binocular Autorefractor



reddot award 2014
winner



Short Manual 7

**“Exporting back-ups and reports
(only plusoptiX A12C and A16)”**

Plusoptix GmbH
Neumeyerstrasse 48
90411 Nuremberg
Germany
www.plusoptix.com

Table of Contents

1	Exporting back-ups and reports	3
---	--------------------------------------	---

List of figures

Figure 1: Data export.....	3
----------------------------	---



This manual is a supplementary short manual. For general information about your Plusoptix device, such as its intended use, basic handling, technical information, maintenance, service, and warranty information, please refer to the user manual that was delivered with your device. This user manual can also be downloaded on our homepage www.plusoptix.com, under support.

List of further supplementary short manuals

1. Adjusting settings and setting up WLAN
2. Preparing and performing a measurement
3. Viewing the measurement results
4. Entering, retrieving or deleting patient data
5. Documenting measurement results electronically
6. Documenting measurement results on paper
7. Exporting back-ups and reports (only plusoptiX A12C and A16)
8. Downloading software updates
9. Troubleshooting malfunctions and measuring interruptions



1 Exporting back-ups and reports

In the plusoptiX A12C and A16 model, all patient data and measurement values are archived in a database on the internal memory of the Plusoptix Binocular Autorefractor. Back-up copies of this database can be saved for safety, and CSV tables can be saved for evaluation and reporting purposes.



Note:
To avoid a loss of data, we recommend regularly making a back-up copy.

Press the button (1) in the settings. Select the file format you want for the data export:

	<p>CSV tables can be edited with all conventional spreadsheet programmes.</p>
	<p>DB files are intended as back-up copies and can be used to restore the database. To restore the database, connect the USB storage with the exported db file in its directory "db" to the Plusoptix device. You will be asked whether the saved database should be restored. If there are several database in the main directory of the SD card, the most up-to-date (by save date) will be restored.</p>



Note:
When you restore a database, a back-up copy of the internal database will first be saved to the USB stick. Then, the internal database will be overwritten by the restoring database. The two databases will not be merged.

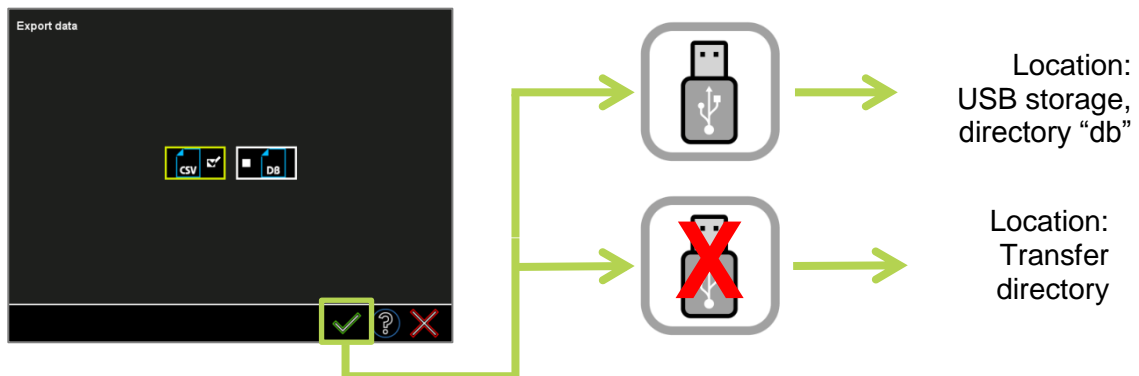


Figure 1: Data export

If an USB stick is connected, a back-up copy will be saved to the USB stick in the selected format. If no USB stick is connected, a back-up copy will be saved in the selected format to a transfer directory. This can be reached by following URLs:

plusoptiX A12: URL: \\px12-xxxx\transfer\
 plusoptiX A16: URL: \\px16-xxxx\transfer\

The "xxx" place marker stands for the last four numbers of the serial number. You will have access through the released transfer directory.